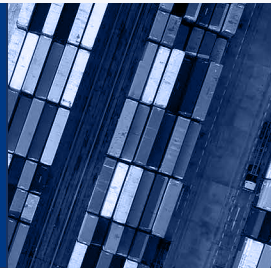


My supply chain insights

Reduce testing with Eurofins

my-supply-chain-insights.com

Testing for life



Only test what's necessary!

You work hard to assure the quality of your products. Your supply chain contains many steps, and you work together worldwide with multiple suppliers. Especially if you have a wide product range, you'll often find that it's important to assure the quality and safety of your products and the materials you use. You receive a lot of information about this from different sources. Gathering, managing and monitoring all this data takes up a lot of your time and brings with it high costs. That's a waste. With 'My supply chain insights', Eurofins offers a complete solution to manage and control your supply chain.

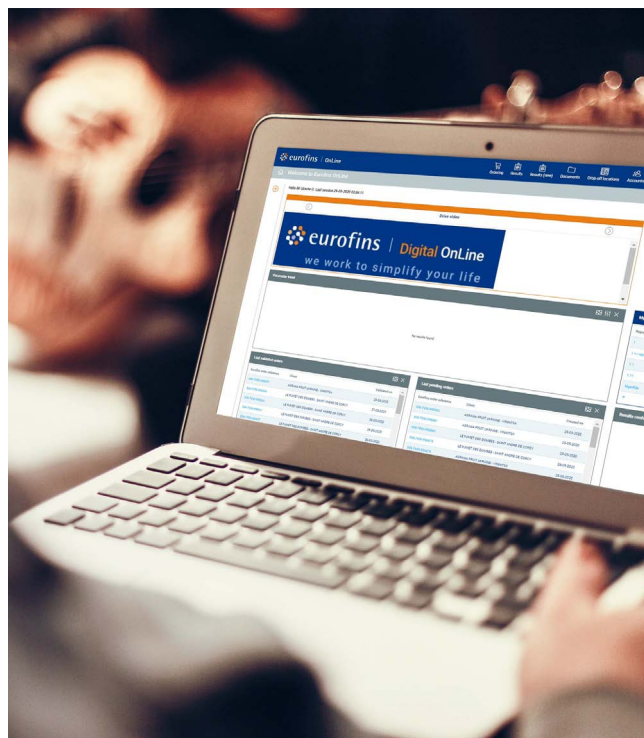
Reduce testing with Eurofins

Based on all the relevant data, legislation and regulations and a risk analysis, our supply chain experts & food and fraud consultants can advise you on how to solve bottlenecks in your supply chain or where you can make savings. And how you can assure quality and prevent fraud. Waste is another important topic. Together with you, we can find ways to further improve the speed and efficiency of your processes and ensure that the products reaching consumers are as fresh as possible.

'My supply chain insights' with the Eurofins dashboard

You no longer need to store important analysis certificates and documents in multiple systems and folders. Our digital dashboard gives you a single place to store all this data, keep it accessible, handle quality control and manage your supply chain. In risk management, everything depends on the quality of your suppliers.

For example, as QA manager you're sure to check the certificates that your suppliers hold for important quality systems like BRC, IFS or FSSC 22000, and if they keep them after a new audit. The dashboard gives you a notification when a certificate is near its expiry date. And of course you want to know their score. If a supplier first scores high performance and later basic or low, then you want to know that. You can also add other documents of your own, such as taste test reports. Here, clarity and accessibility give you insight.





Maarten Molenaar (QESH Manager DO-IT):

"My supply chain insights is definitely useful for the international biosector. We want to monitor our product quality and safety right from the start of the chain. As far as I'm concerned, a dashboard in which I can check my entire supply chain is a must".

Monitor quality in your supply chain

Handling samples and analyses without using e-mails: how can you do that? You can track the status of your analyses live 24/7 in the online dashboard. That means you can monitor your quality in the supply chain at multiple points. For example you can see when the planned sampling date or the expected reporting date are known. You receive an update as soon as the sampling has been completed or the report is available. And you can clearly view the analysis certificates with full information about the quality and safety of your product or ingredient.

By linking analyses to monitoring plans, you can analyse more specifically and as a result save costs. You can simply set notifications of when limits are exceeded, and carry out trend analyses yourself with all the relevant data. So you can concentrate on your primary processes.

Check your international supply chain!

Whether you're dealing with farming (for ground management and quality of seeds), trade and transport (testing for contaminants and the quality of materials), production or (with shelf life and taste). From farm to fork: we help growers, retail (with shelf life and taste). From farm to fork: we help growers, traders, producers and retailers, wherever you're based.

With our worldwide accredited and certified laboratory and knowledge network, we're represented in 50 countries in the agricultural sector.

Reduce testing with Eurofins

We make your supply chain transparent from start to finish. So we may at some points find that 'you're really testing too much here – you can test less and more effectively'. That's because the suppliers in your chain have already done that, or because your customers also get these analyses carried out. Of course when we do this we always keep a strong focus on ensuring food safety and quality and all the associated requirements.

My supply chain insights gives you:

- Clear online oversight of your processes 24/7 with Eurofins Online, Europortal and the B-to-B connector.
- Food fraud advice.
- Reduced testing: only test what's necessary and save costs.
- Increased food quality & safety.

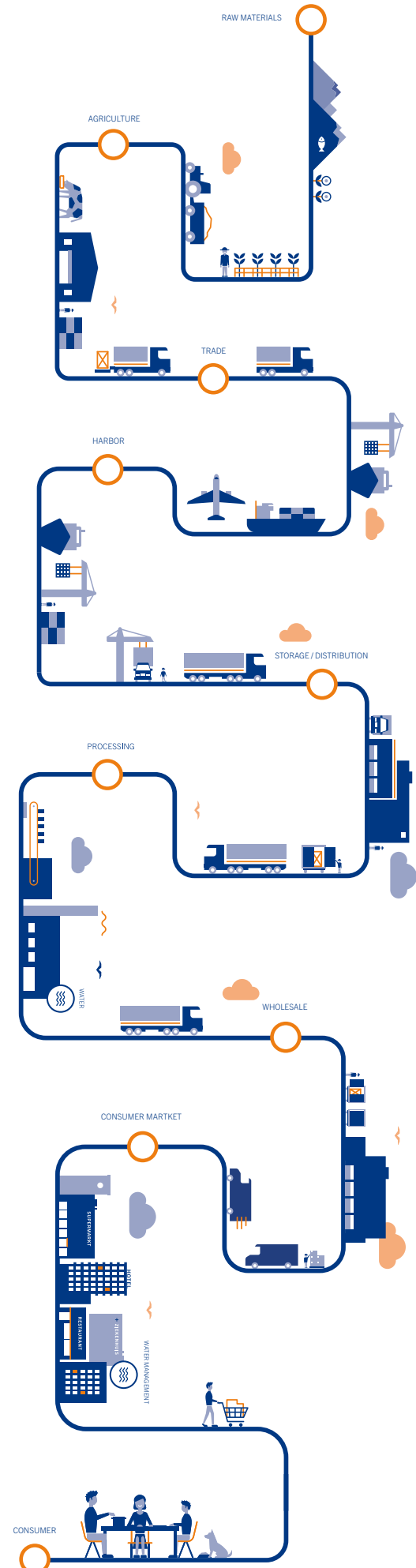
Eurofins gives you insight into your total supply chain. So you can analyse more effectively.

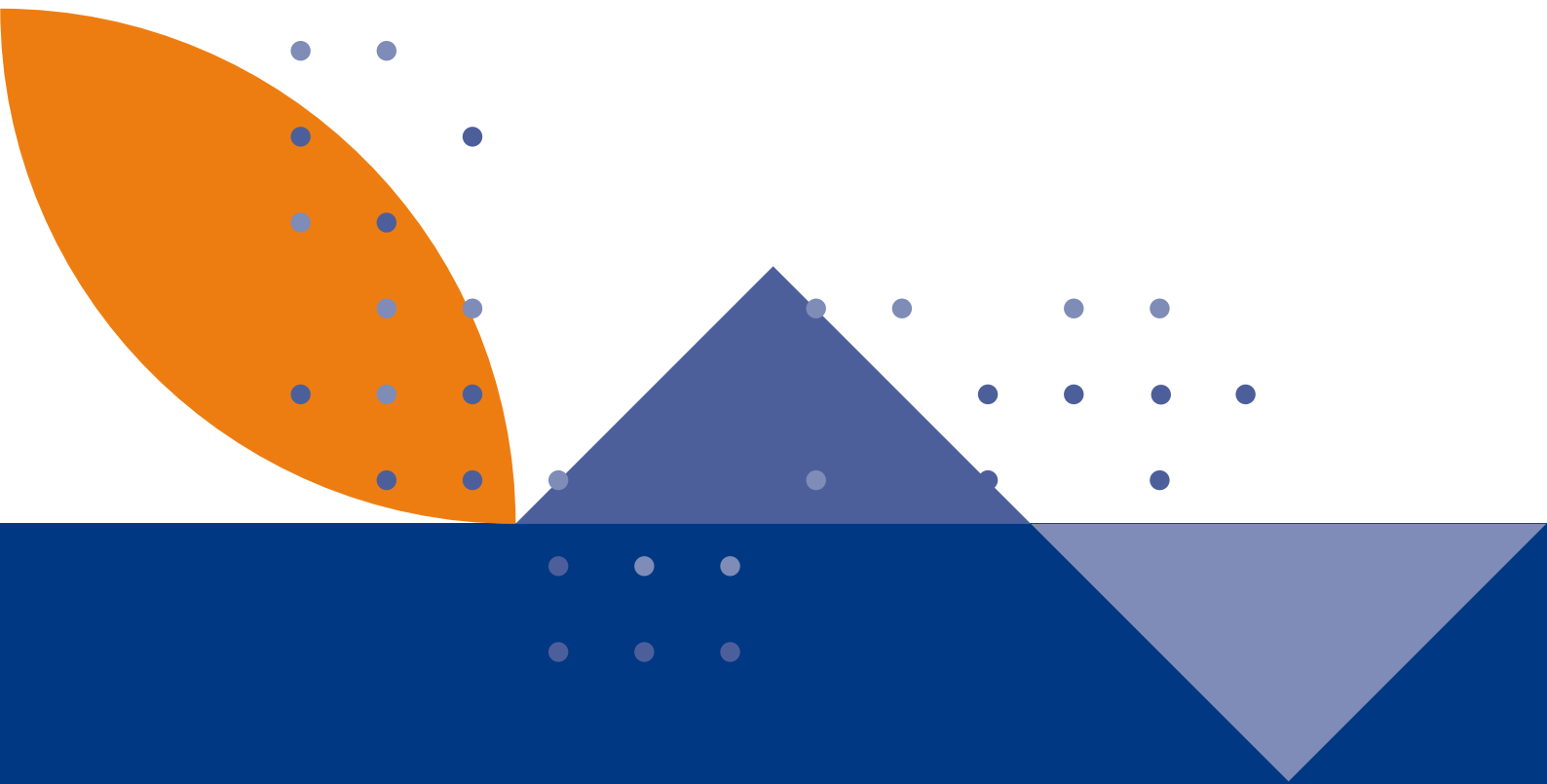
Eurofins contributes to food safety and quality in every supply chain with: Sampling + analyses in accordance with contracts and certifications, fraud detection, shelf life checks, micronutrient & vitamin analyses, challenge testing, benchmark analyses and much more.

Ask your account manager about what we can do and how to get your supply chain approach right.

Eurofins consultancy: your food safety partner.

One of our team of food safety consultants will be glad to advise you on 'My supply chain insights', and will also help you in other ways to identify the risks associated with food safety. Our consultant will support you in implementing the required checks. That will allow you to give your customers a guarantee that your product meets the required food safety standards. They will also help you to meet the applicable quality requirements. Depending on your needs and wishes, QA and QC specialist from our consultancy team can support you for short or longer periods in all activities relating to food safety. Whether you need extra personnel on a temporary basis, or as replacements in case of illness or holiday leave. In brief: our consultant will help you to implement a quality system, inspections, audits and risk management to ensure good food safety.





Would you like to have insight into your complete supply chain?

If you choose Eurofins, we'll go through these steps with you:

- 1.** You start with an intake meeting with one of our chain experts. They will identify points in your supply chain where information is incomplete and the challenges you are facing. They create an overall view of your chain, with all the locations and transport involved.
- 2.** Then they present:
 - Digital solutions for a live online overview of data and control information.
 - Advice on optimal chain processes, only testing what's necessary: an analysis and monitoring plan with which you can identify the right data.
- 3.** Implementation of a custom-made digital platform.

Following careful implementation and an extensive onboarding programme, you can get started. If you would like to find out more about better management of your supply chain, just contact us on 088 – 831 00 00 or sales-food-nl@eurofins.com

